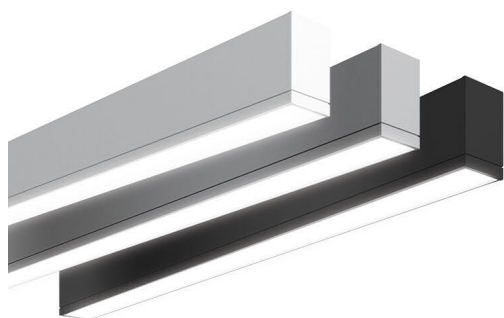




Shaffer
ENERGIZING TOMORROW

LED Linear Light



< Benefits

- Designed for Perfection
- Durable design with corrosion resistant.
- Suitable replacement of Linear conventional Lights.
- Available with Dimmable option.
- Available in Neutral White and Cool White Color suitable for office lighting.
- Appropriate Unify Glare Ratio.
- Use of premium grade alloys for enhanced thermal conduction.
- High quality diffuser is used for optics.
- Easy Ballast mounting with Velcro.
- Long life LED System coupled with electrical driver to deliver optimal performance.

Typical Applications Include:

- Office Lighting.
- Common Area Lighting.
- Hospital & Wellness Lighting.

< Features

Electrical Parameters

Input Voltage	140-277 V AC
Wattage	40 Watt
Driver Efficiency	>85
Power Factor	>0.9
Total Harmonic Distortion	<15
Over Voltage Protection	Provided

Optical Parameters

Colour Temperature	3000-6500K
CRI	>80
LED Life with L70 Criteria	>35000 Hours
Optics	Diffused Acrylic
Lumen Output	>90 Lumen/Watt

General Parameters

Operating Temperature Range	-5 to 50 degree centi-grade
Size	1000 mm 1200 mm
Dimmable	Yes
Mounting	Recessed/Surface/Pendent
Off State Power	Zero
Certification	CE
Environment	IP-20



PRODUCT ORDERING INFORMATION

Product Code	Product	Colour Temp.	Wattage
SH LL 40W WW/CW REC/SRF/PND WH	LED Linear Light	WW/CW	40W

Asia Pacific • Africa • Middle East • Europe
Specifications are typical values and may change without notification.
Copyright © Shaffer Energy. 2018 All rights reserved.